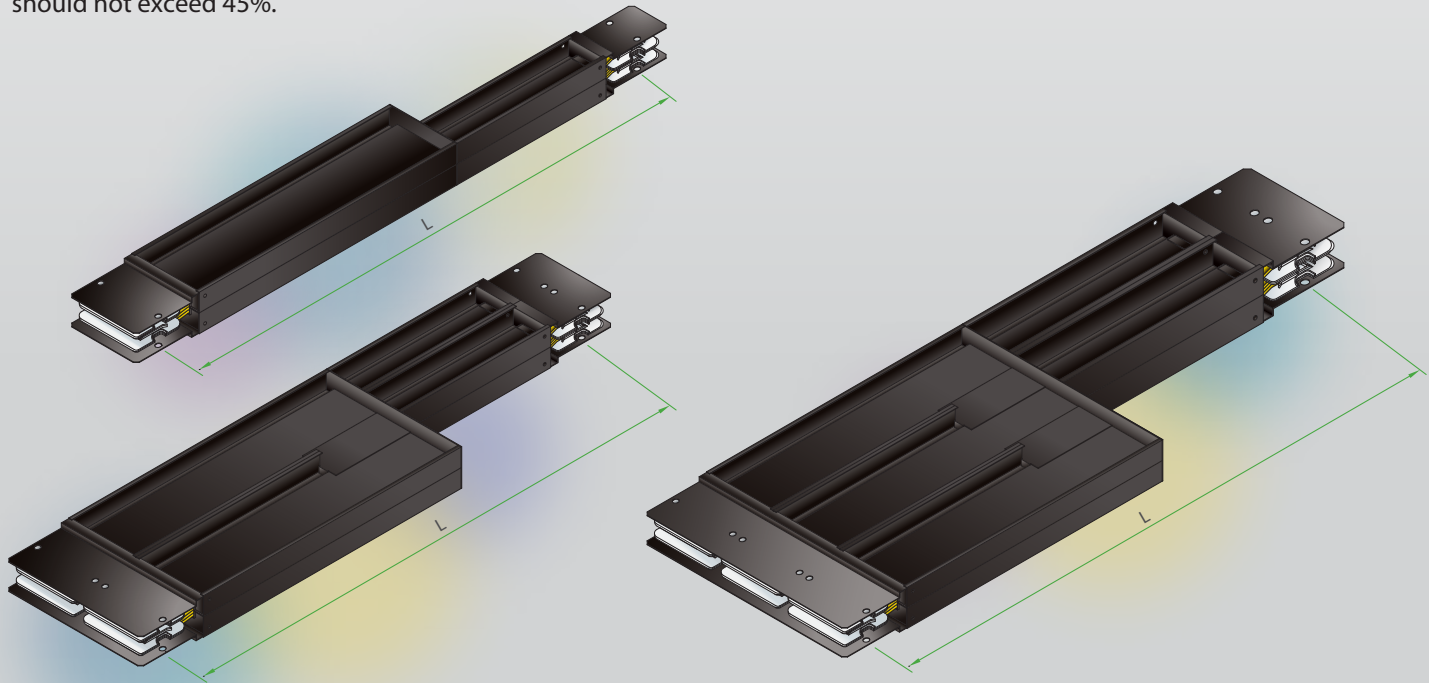


Reducer

Reducer is used to reduce busbar sizes to the final load. It provides users with more economic power transmission and distribution method. The minimum length (L) is 600mm and the reduction from a higher busduct rating to a lower busduct rating should not exceed 45%.



Remark: If the reduction is more than 45%, a protective device (e.g. circuit breaker) must be installed in between both busduct feeders.